



**MOTO GUZZI®**

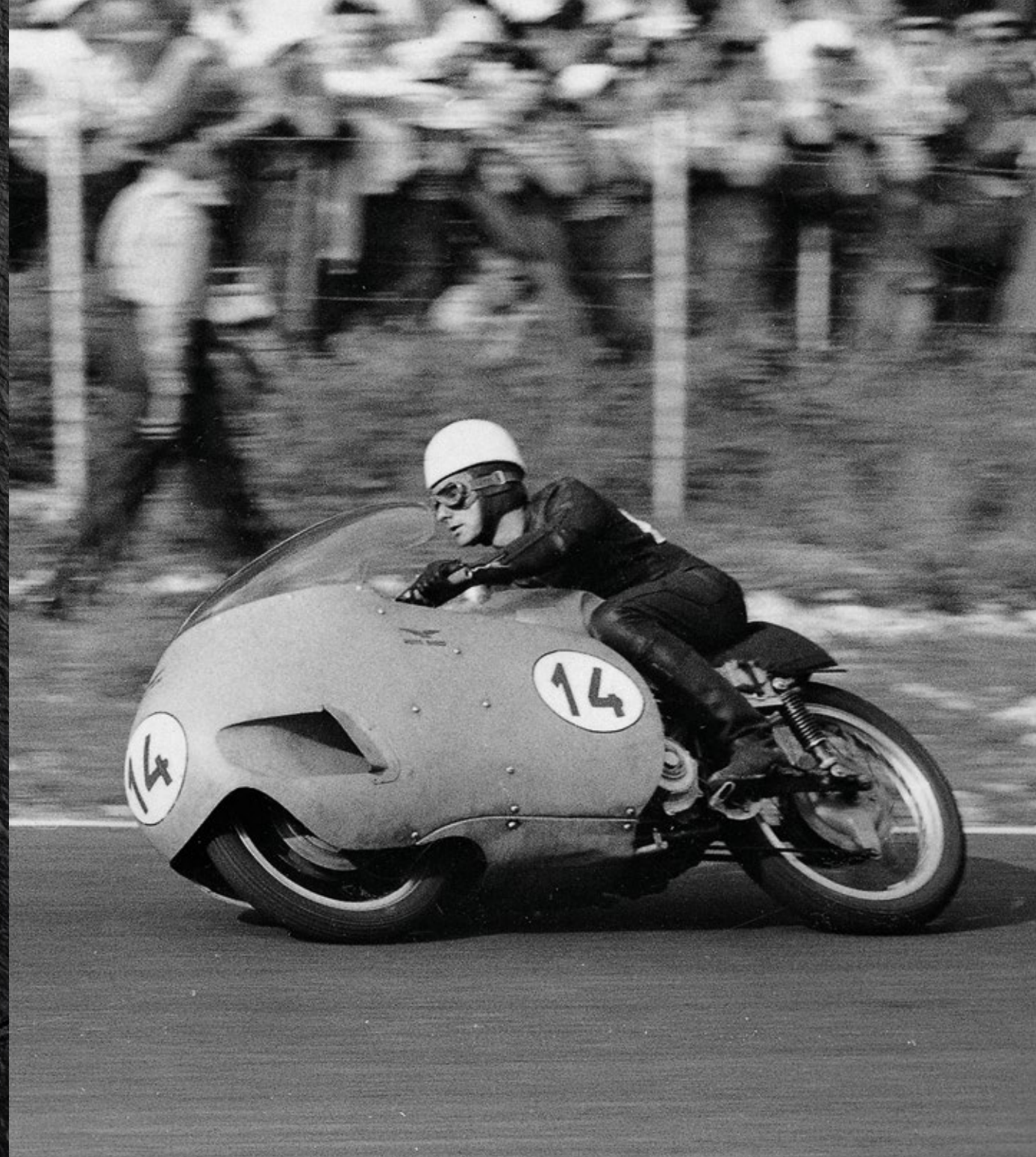
**2019 RANGE**



**THE MINERALS TELL OF AN AFFINITY WITH A PLACE,  
MANDELLO DEL LARIO, WHERE MOTO GUZZI HAS ITS ROOTS.  
THE RUGGED GRANDEUR OF THE GRIGNE ROCKS, THE ALPINE  
MASSIF THAT DOMINATES THE AREA, TELLS THE STORY  
OF A UNIQUE LAND THAT GAVE RISE TO A BRAND THAT  
SYMBOLISES MOTORCYCLING AROUND THE WORLD.  
THE BLACK MARBLE OF VARENNA, ETERNAL AND SEDUCTIVE,  
RECALLS THE BLACK SOUL OF MOTO GUZZI.  
STURDINESS AND SOPHISTICATION WRAPPED IN AN  
UNPARALLELED DARK MYSTIQUE, FOR CONNOISSEURS.**

# THE ORIGINS OF THE LEGEND

Moto Guzzi stands for pride in a glorious tradition, cutting-edge research and Italian style. All this is anchored at Mandello del Lario in 1921, where it all began. It has been in continuous motion ever since. This is a history rooted in riders and bikes, legendary victories, talent and passion.





# COMMUNITY

## **YOU AND YOUR MOTO GUZZI PASSION.**

An ode to freedom that is renewed every time the helmet is put on and the key is turned. We know that feeling, because for nearly a hundred years, it has united those across the world who, like us, have an eagle tattooed on their heart. Join The Clan, the community of Moto Guzzi owners and fans. Here, you will find the fuel to stoke your fiery Moto Guzzi passion and increasing numbers of like-minded souls to accompany you on your journey with this Italian legend.

Sign up now at [theclan.motoguzzi.com](https://theclan.motoguzzi.com)

# OPEN HOUSE

Can you imagine the energy of 30,000 Guzzi enthusiasts on their bikes? This special, total immersion takes place in the heart of the Moto Guzzi universe: over 800 test rides, the Moto Guzzi Museum, the highly acclaimed Wind Tunnel - one-of-a-kind in the motorcycle industry - tours of the engine production lines and vehicle assembly lines. A triumphant history and vision for the future as the brand nears its 100th anniversary with exceptional dynamism in terms of innovation, products and events.



MOTO GUZZI®

OPEN HOUSE 2018

## ASSEMBLAGGIO MOTOCICLETTE

Ogni Moto Guzzi che percorre le strade del mondo è uscita da questo stabilimento. Qui ogni Moto Guzzi è stata assemblata a mano sin dal 1921, quando l'Aquila stabilì il suo nido tra queste montagne. E qui oggi si combinano magistralmente le migliori e più avanzate tecnologie con l'artigianalità della più preziosa manifattura italiana. Così Moto Guzzi, coerentemente col valore della autenticità che da sempre la distingue, crea in questo luogo moto autentiche, fatte di materiali autentici. Motociclette pensate e realizzate da motociclisti per veri motociclisti.

## BIKE ASSEMBLY

Every Moto Guzzi that travels the roads of the world came from this factory. Here every Moto Guzzi is assembled by hand since 1921, when the Eagle established its nest among the mountains. And this is where the best and most advanced technologies are masterfully combined with the craftsmanship of the most precious Italian products. That's why Moto Guzzi creates bikes that are in keeping with the brand's authentic character. Authentic bikes made with authentic materials. Bikes designed and built by motorcycle enthusiasts for motorcycle enthusiasts.





**V85TT** MOTO GUZZI

# ROCK(S) 'N' ROAD(S)

Overcoming seemingly impossible challenges is a thrill for a select few. V85 TT, the first and only Classic Enduro, is the perfect combination of two opposite worlds: enduro functionality and the elegance of classic lines. It draws inspiration from the enduro models from the '80s and the travel cult, enhancing the joy of daily discovery. Adventure for those who know how to tackle it, popular aesthetics to pay tribute to a timeless motorcycling culture. The sound of its engine is the soundtrack of the trip, evoking different sensations depending on the terrain and the landscapes being travelled. V85 TT is the only medium engine capacity enduro with cardan shaft final drive, Moto Guzzi transversal V engine and dual LED headlight with DRL that trace the shape of the Moto Guzzi eagle. Comfortable and with a strong personality, it thrills both newcomers and long-time Guzzisti.



**V85TT** MOTO GUZZI

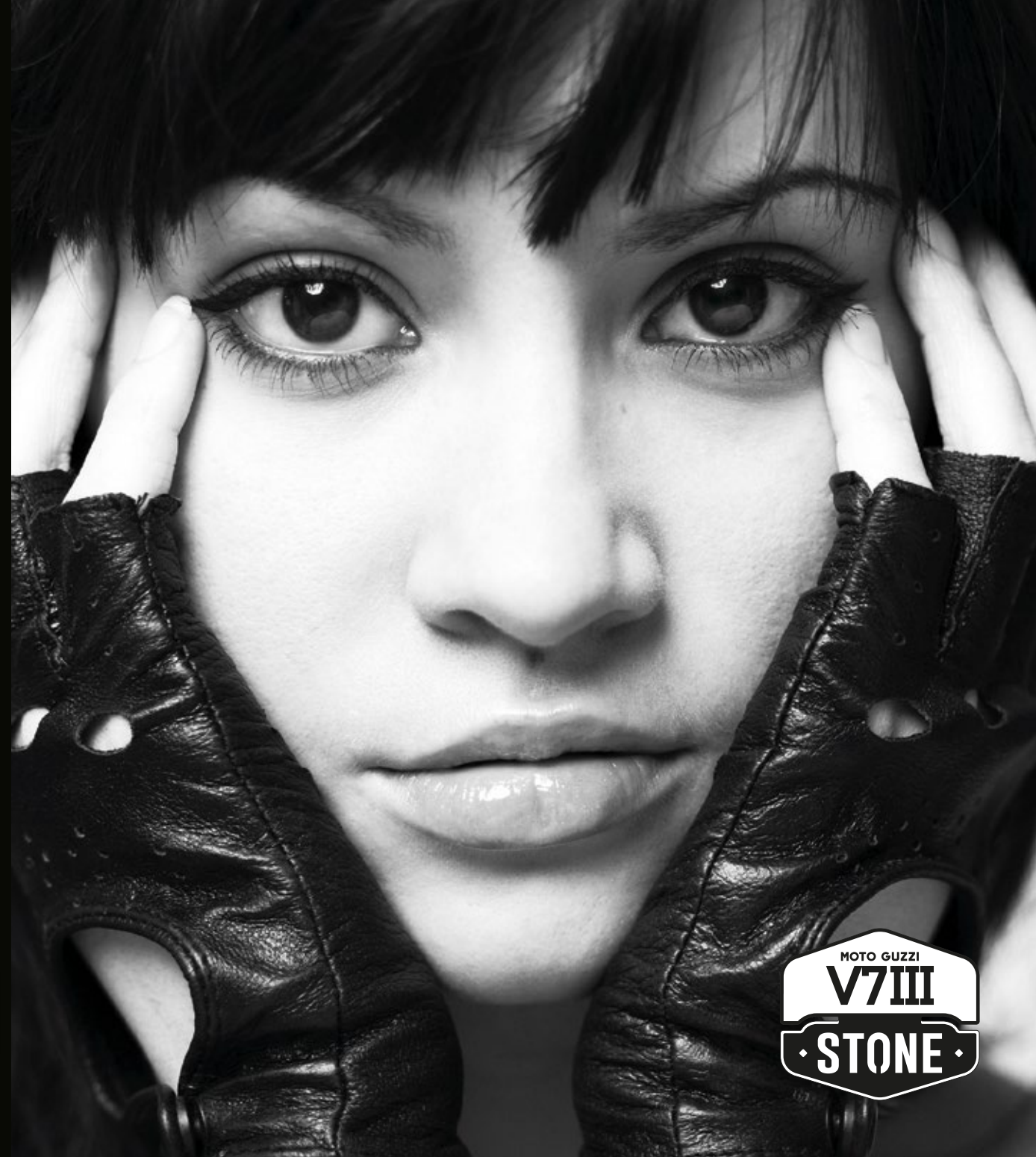


NAKED



# TRULY V7. JUST BETTER

The V7's dark soul reveals its eclectic and minimalist nature with an aesthetic that sets aside chrome in favour of matt black paint. The profoundly metropolitan dark matt look is complemented by a single-dial dashboard, a special saddle, a shortened front mudguard and light alloy spoked wheels. The V7 III Stone also has a new range of colours: Nero Ruvido, Grigio Granitico and Rosso Rovente.



# NIGHT THRILL

V7 III Stone in the Night Pack version is a modern interpretation of the feeling of authenticity that inspired the V7 III range, third generation descendant of the legendary V7. It dons new stylistic and functional solutions: the new headlight, turn indicators and brake light are now LED and ensure high visibility in any riding condition. The saddle adopts heat welded stitching and the embroidered Moto Guzzi logo. The lowered headlight and instrument cluster, along with the new rear mudguard, short and sleek, lighten up the unique and unmistakable line of the V7. Available in the classic Nero Ruvido livery and the Bronzo Levigato and Blu Pungente colour schemes.



**V7 III Special**  
MOTO GUZZI

# CONTEMPORARY CLASSIC STYLE

The heritage of early V7 bikes provides the inspiration for an elegant motorcycle, rich in chrome details and enhanced with a coloured band along the sides of the under-seat, which recalls the horizontal band of the same colour that features on the tank. Enlivened with polished graphics, it comes in an Nero Onice or Grigio Cristallo variant. It stands out for many distinctive details, such as the spoked wheels with polished aluminium channels and black hubs, circular double-quadrant instrument cluster, and the brown seat with "old school" effect quilting complete with chrome-plated passenger grab handle.



# RACING INSTINCT

Manufactured in a numbered edition and following in the racing tradition of the eagle brand, the V7 III Racer is a true custom bike with incredible attention to detail. References to Moto Guzzi's sporting triumphs begin with the Rosso Corsa colour of the frame and swingarm, which take inspiration from the legendary red frame of the 1971 V7 Sport. These are perfectly paired with the graphics on the satin-chrome fuel tank dominated by a red eagle. The racing look can also be seen in the semi-handlebar and hump saddle, while the side panels and injector covers in black anodised aluminium are the work of skilled craftsmen. The versatility of this traditionally one-seat model can be seen in a standard type-approved two-seat version with special passenger foot pegs and Öhlins shock absorbers for more challenging road surfaces.



**V7 III RACER**  
MOTO GUZZI



**V7 III RACER**  
n° 0000



V7 III  
**Rough**  
MOTO GUZZI



## URBAN COUNTRY

An unmistakable look, with high-grip tyres, spoked rims and details that give the V7 III Rough its urban country style. Available in the Grigio Grafite colour scheme and a brand new Verde Mimetico, the equipment includes a purpose-built seat with stitching, a passenger grab rail and a pair of aluminium side panels. The mudguards are made of the same high-quality material. The headlight frame is painted black and the fork stanchions are protected by classic rubber dust covers.

# METROPOLITAN BIKERS

Which V7 would you want to ride through the city centre streets? Moto Guzzi has the answer with the V7 III Milano version. This model is an evolution of the V7 III Special with which it shares the same distinctive features, including the dual-dial dashboard, chrome exhaust and passenger grab rail, as well as glossy tank colours. In addition, it distinguishes itself with spoked wheels that lend it a more modern look. The standard equipment comprises high-end details like aluminium mudguards and side panels.



**V7 III Milano**  
MOTO GUZZI



**V7 III CARBON**  
MOTO GUZZI

# DARK URBAN SOUL

Manufactured as a numbered, limited edition, the V7 III Carbon celebrates customisation, combining genuine V7 style with the fine, cutting-edge quality found in the numerous carbon fibre components, including sleek shortened mudguards and side panels, that underscore the youthful, dynamic nature of the Moto Guzzi best-seller. V7 III Carbon is clad entirely in matt black, a colour that offers a stark contrast to the red details: the Brembo front brake caliper, the logos on the side panels and the Eagle on the fuel tank. The “made in Mandello” mechanics are also striking, given the satin finished red cylinder head covers. The saddle features red stitching and boasts an innovative water-repellent and weatherproof Alcantara® covering, ideal for outdoor use. The tank cap, equipped with a locking mechanism, is made of anodised black billet aluminium. Likewise, the headlight frame and the injector covers are black. The model serial number is identified on a plate positioned on the handlebar risers. There are 1921 units available: this number was chosen because it recalls the year Moto Guzzi was founded.



The image features a dark, black background with a complex, organic marbled pattern in shades of white and light grey. The pattern consists of numerous thin, branching, vein-like structures that create a dense, intricate texture. Centered horizontally across the middle of the image is the word "CUSTOM" in a large, bold, white, sans-serif typeface. The letters are solid white and stand out prominently against the dark, textured background. The overall aesthetic is modern and sophisticated, often used in branding for high-end or artistic products.

CUSTOM



**V9 ROAMER**  
MOTO GUZZI



## TRUE CHARACTER

The sturdy, high-quality materials come with refined finishes. Only the best will do to provide superior style that will last over time. The 850 cc transverse V engine was designed to offer significant torque straight away. This, combined with the reduced weight of the engine, translates into an intuitive, immediately responsive riding experience that minimises effort and maximises fun.



# IRRESISTIBLY UNIQUE

Moto Guzzi reinterprets the straightforward and aggressive style of the legendary Bobber. The chrome elements make way for matt colours, while the short mudguard and high-profile tyres emphasise the bike's true grit. The 850 cc transverse V engine, shaft drive and steel frame epitomise the essence of Moto Guzzi conveyed in true bobber style. Additionally, the first-class metal mudguards are perfectly suited to the imposing tyres, which deserve to be shown off with pride. Dark matt paint is applied to the steel tank and a chessboard graphic juices it up, highlighting the V9 Bobber's sporty nature.

Authentic, direct, irresistible. A tribute to the spirit of every true rider.



**V9 BOBBER**  
MOTO GUZZI

# V9 BOBBER

MOTO GUZZI

## Sport



## LONE RIDER

It inherits its gritty character from the bobber legend and '50s era races. The custom V9 Bobber Sport special series has a low and sporty ride thanks to the lowered single-seat saddle and its low drag handlebars. The street-legal slip-on exhaust, with a new design, enhances the sound of the Moto Guzzi 850 cc V-twin and the fully adjustable Öhlins shock absorbers ensure maximum control while keeping the thrills intact. The total matt black look is uninterrupted by the brand new orange colour of the tank, with the eagle in burnished finish that spreads out over the aluminium side panels. Oversized tyres and a front end with lowered headlight and shortened mudguard complete the charismatic spirit of this special from Mandello.



# CRUISER



# BOLD BY NATURE

Fierce on asphalt, the bike's charismatic personality is boldly highlighted by every detail, for biker's with character. Minimal frills, a longer riding position, a drag bar handlebar and a muscular profile: Audace is meant for the lone crusader, who is accompanied only by the powerful roar of the engine and has no destination in mind. The bike's dark soul is expressed best by deep-toned mechanical elements, rather than chrome, combined with a minimalistic front-end, a circular light assembly, a carbon fibre mudguard and new carbon fibre side panels to create the proper look. The short exhaust, the tail fairing and the grid protecting the radiator all underscore the bike's bold personality. To top it off, the handlebar, sporty foot pegs and ergonomic saddle make for a riding experience that is pure pleasure.



MOTO GUZZI **AUDACE**

MOTO GUZZI  
*Eldorado*



# THE LEGEND IS BACK

In the biker's imagination, the Eldorado is the on-the-road icon. This bike always has a road to explore straight ahead, a horizon to skim. The spoked wheels with white-rimmed tyres, the paint work on the tank and chrome side panels, the minute attention to aesthetic detail and chrome trim are just some of the distinctive elements of this bike. The vintage look is captured in the brakes, tyres and suspension that work hand-in-hand with latest-generation technology.



# EXPANDING JOURNEY BORDERS

The Grand Touring spirit of this bike is revealed in its unmistakable design that is highlighted by two-tone graphics and sophisticated colour schemes. Total comfort is ensured through the introduction of special equipment that confirms this bike's vocation for travel: standard deflectors, a chrome rear handle and a backrest for the passenger.



*California*  
MOTO GUZZI  
TOURING



**MGX-21**  
FLYING FORTRESS

# SEDUCING THE NIGHT

Black, brooding and elegant, a synthesis of Italian taste and American style, MGX-21 breaks every mould. Moto Guzzi's "Flying fortress" is designed for those who don't turn away from the most extreme contrasts and who thrive on blending adventure, fun, futuristic solutions and refined finishes. The MGX-21 will push you beyond the city boundaries to travel to any horizon you choose.







# MOTO GUZZI®

## ACCESSORIES

A Moto Guzzi accessory is original only when it is conceived of, designed and engineered by the same hand that gives these bikes their unique, recognisable DNA. A Moto Guzzi accessory is original only when it makes your bike so personal that you too feel part of the legend. If indeed this is true, calling it an accessory is an understatement. Your Moto Guzzi Original will make your passion visible. And your bike will get the respect it deserves.

Discover the full range of Moto Guzzi accessories at [MOTOGUZZI.COM](http://MOTOGUZZI.COM)





## HELMETS

The great motorcycling tradition, the attention to detail and use of high quality materials are present in the new range of Moto Guzzi helmets. They have been designed to ensure the highest level of protection and design in order to provide objects with a strong personality. It has been set great attention to the use of graphics with strong emotional content, they emphasize the history and heritage of Moto Guzzi (the three-tone flag, the typical of the '30s racing graphics).

Explore the full range at [MOTOGUZZI.COM](https://www.motoguzzi.com)





**MOTO GUZZI®**

APPAREL

## STRONG PERSONALITY

The Moto Guzzi legend is built on great enthusiasm and brilliant technical intuition, crowned by countless triumphs. This ongoing effort continues to produce exclusive bikes with strong personalities. The clothing and accessories collection takes inspiration from these values and makes use of colours and details that are in sync with the prestige of the brand.

Explore the full range at [MOTOGUZZI.COM](https://www.motoguzzi.com)



# COLOUR RANGE

V85 TT



V7 III STONE



V7 III STONE NIGHT PACK



V7 III SPECIAL



V7 III ROUGH



V7 III MILANO



V7 III CARBON



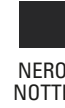
V7 III RACER



V9 BOBBER SPORT



V9 BOBBER



V9 ROAMER



AUDACE



ELDORADO



CALIFORNIA



MGX-21



<b>V7 III STONE V7 III STONE NIGHT PACK V7 III MILANO V7 III CARBON</b>	<b>V7 III SPECIAL V7 III ROUGH V7 III RACER</b>	<b>V9 ROAMER V9 BOBBER V9 BOBBER SPORT</b>	<b>V85 TT</b>
---	---	--	---------------

<b>Engine</b>	Transversal 90° V-twin, two valves per cylinder	Transversal 90° V-twin, two valves per cylinder
<b>Displacement</b>	744 cc	744 cc
<b>Bore x Stroke</b>	80 x 74 mm	80 x 74 mm
<b>Maximum power</b>	52 HP (38 kW) - 6,200 rpm **	52 HP (38 kW) - 6,200 rpm **
<b>Maximum torque</b>	60 Nm - 4,900 rpm.	60 Nm - 4,900 rpm.
<b>Gearbox</b>	6 speed	6 speed
<b>Front suspension</b>	Hydraulic telescopic fork, Ø 40 mm	Hydraulic telescopic fork, Ø 40 mm
<b>Rear suspension</b>	Swingarm Twin-sided with two spring preload adjustable shock absorbers	Swingarm Twin-sided with two spring preload adjustable shock absorbers RACER: Swingarm Twin-sided with 2 Öhlins fully adjustable shock absorbers.
<b>Front brake</b>	Stainless steel floating disk Ø 320 mm, Brembo caliper with 4 differentiated and opposed pistons. ABS as standard	Stainless steel floating disk Ø 320 mm, Brembo caliper with 4 differentiated and opposed pistons. ABS as standard
<b>Rear brake</b>	Stainless steel disk Ø 260 mm, floating 2 pistons caliper. ABS as standard	Stainless steel disk Ø 260 mm, floating 2 pistons caliper. ABS as standard
<b>Front wheel</b>	Lightweight alloy, 18" 100/90 (18" 110/80 alternatives tyres)	Spoked, 18" 100/90 (18" 110/80 alternatives tyres) ROUGH: Spoked, 18" 110/80 (18" 100/90 alternatives tyres)
<b>Rear wheel</b>	Lightweight alloy, 17" 130/80	Spoked, 17" 130/80
<b>Seat height</b>	770 mm	770 mm
<b>Dry weight</b>	189 kg	193 kg RACER: 189 kg
<b>Wet weight*</b>	209 kg	213 kg RACER: 209 kg
<b>Fuel tank</b>	21 l (4 reserve)	21 l (4 reserve)
<b>Emissions compliance</b>	EU 4	EU 4
<b>Emissions CO<sub>2</sub></b>	128 g/km	128 g/km RACER: 132 g/km
<b>Consumption</b>	5.5 l/100km	5.5 l/100km RACER: 5,7 l/100 km

<b>Engine</b>	Transversal 90° V-twin, two valves per cylinder	Transversal 90° V-twin, two valves per cylinder
<b>Displacement</b>	853 cc	853 cc
<b>Bore x Stroke</b>	84 x 77 mm	84 x 77 mm
<b>Maximum power</b>	55 HP (40.44 kW) - 6,250 rpm**	80 HP (59 kW) - 7,750 rpm**
<b>Maximum torque</b>	62 Nm - 3,000 rpm	80 Nm - 5,000 rpm
<b>Gearbox</b>	6 speed	6 speed
<b>Front suspension</b>	Hydraulic telescopic fork, Ø 40 mm	Upside-down hydraulic telescopic fork Ø 41 mm, with adjustable extension and spring preload
<b>Rear suspension</b>	Swingarm Twin-sided with two spring preload adjustable shock absorbers BOBBER SPORT: Swingarm Twin-sided with 2 Öhlins fully adjustable shock absorbers.	Swingarm Twin-sided with lateral mono shock absorber, adjustable extension and spring preload
<b>Front brake</b>	Stainless steel floating disk Ø 320 mm, Brembo caliper with 4 differentiated and opposed pistons. ABS as standard	Double stainless steel floating disk Ø 320 mm, radial Brembo calipers with 4 opposed pistons. ABS as standard
<b>Rear brake</b>	Stainless steel disk Ø 260 mm, floating 2 pistons caliper. ABS as standard	Stainless steel disk Ø 260 mm, floating 2 pistons caliper. ABS as standard
<b>Front wheel</b>	BOBBER/BOBBER SPORT: Lightweight alloy, 16" 130/90 ROAMER: Lightweight alloy, 19" 100/90	Spoked with tube, 19" 110/80.
<b>Rear wheel</b>	Lightweight alloy, 16" 150/80	Spoked with tube, 17" 150/70.
<b>Seat height</b>	800 mm BOBBER SPORT: 785 mm	830 mm
<b>Dry weight</b>	194 kg	208 kg
<b>Wet weight*</b>	210 kg	229 kg
<b>Fuel tank</b>	15 l (4 reserve)	23 l (5 reserve)
<b>Emissions compliance</b>	EU 4	EU 4
<b>Emissions CO<sub>2</sub></b>	114 g/km	118 g/km
<b>Consumption</b>	5.0 l/100 km	4.9 l/100km

The company reserves the right to make technical and aesthetic modifications at any time. Complete information regarding models and accessories is available at [www.motoguzzi.com](http://www.motoguzzi.com). Ride carefully, always wearing a helmet and suitable gear. Always comply with the Highway Code and respect the environment. Read the user and maintenance manuals thoroughly. Always request original, homologated spare parts in accordance with the laws in force. Refer to Official Moto Guzzi Dealers and Authorised Retailers for a secure purchase and guaranteed customer service.

\*Weight of bike ready to ride, with all fluids and the fuel tank 90% full

\*\*Also available as a 35 kW version, which can be driven with an A2 driver's licence

	AUDACE	ELDORADO		CALIFORNIA TOURING	MGX-21
<b>Engine</b>	Transversal 90° V-twin, four valves per cylinder, twin spark	Transversal 90° V-twin, four valves per cylinder, twin spark	<b>Engine</b>	Transversal 90° V-twin, four valves per cylinder, twin spark	Transversal 90° V-twin, four valves per cylinder, twin spark
<b>Displacement</b>	1,380 cc	1,380 cc	<b>Displacement</b>	1,380 cc	1,380 cc
<b>Bore x Stroke</b>	104 x 81.2 mm	104 x 81.2 mm	<b>Bore x Stroke</b>	104 x 81.2 mm	104 x 81.2 mm
<b>Maximum power</b>	96 HP (71 kW) - 6,500 rpm	96 HP (71 kW) - 6,500 rpm	<b>Maximum power</b>	96 HP (71 kW) - 6,500 rpm	96 HP (71 kW) - 6,500 rpm
<b>Maximum torque</b>	121 Nm 3,000 rpm	121 Nm 3,000 rpm	<b>Maximum torque</b>	121 Nm 3,000 rpm	121 Nm 3,000 rpm
<b>Gearbox</b>	6 speed	6 speed	<b>Gearbox</b>	6 speed	6 speed
<b>Front suspension</b>	Hydraulic telescopic fork Ø 45 mm	Hydraulic telescopic fork Ø 45 mm	<b>Front suspension</b>	Hydraulic telescopic fork Ø 45 mm	Hydraulic telescopic fork Ø 45 mm
<b>Rear suspension</b>	Swingarm Twin-sided with two extension and spring preload adjustable shock absorbers, remote tank	Swingarm Twin-sided with two spring preload adjustable shock absorbers	<b>Rear suspension</b>	Swingarm Twin-sided with two extension adjustable shock absorbers, remote spring preload adjust	Swingarm Twin-sided with two extension adjustable shock absorbers, remote spring preload adjust.
<b>Front brake</b>	Double stainless steel floating disks Ø 320 mm, radial Brembo calipers with 4 opposed pistons. ABS as standard	Double stainless steel floating disks Ø 320 mm, radial Brembo calipers with 4 opposed pistons. ABS as standard	<b>Front brake</b>	Double stainless steel floating disks Ø 320 mm, radial Brembo calipers with 4 opposed pistons. ABS as standard.	Double stainless steel floating disks Ø 320 mm, radial Brembo calipers with 4 opposed pistons. ABS as standard.
<b>Rear brake</b>	Stainless steel disk Ø 282 mm, floating 2 parallel pistons Brembo caliper. ABS as standard	Stainless steel disk Ø 282 mm, floating 2 parallel pistons Brembo caliper. ABS as standard	<b>Rear brake</b>	Stainless steel disk Ø 282 mm, floating 2 parallel pistons Brembo caliper.	Stainless steel disk Ø 282 mm, floating 2 parallel pistons Brembo caliper.
<b>Front wheel</b>	Lightweight alloy, 18" 130/70.	Spoked, 16" 130/90.	<b>Front wheel</b>	Lightweight alloy, 18" 130/70.	Lightweight alloy, 21" 120/70.
<b>Rear wheel</b>	Lightweight alloy, 16" 200/60.	Spoked, 16" 180/65.	<b>Rear wheel</b>	Lightweight alloy, 16" 200/60 R 16	Lightweight alloy, 16" 180/60.
<b>Seat height</b>	740 mm	740 mm	<b>Seat height</b>	740 mm	740 mm
<b>Dry weight</b>	290 kg	306 kg	<b>Dry weight</b>	322 kg	332 kg
<b>Wet weight*</b>	314 kg	330 kg	<b>Wet weight*</b>	346 kg	356 kg
<b>Fuel tank</b>	20.5 l (5 reserve)	20.5 l (5 reserve)	<b>Fuel tank</b>	20.5 l (5 reserve)	20.5 l (5 reserve)
<b>Emissions compliance</b>	EU 4	EU 4	<b>Emissions compliance</b>	EU 4	EU 4
<b>Emissions CO<sub>2</sub></b>	231 g/km	191 g/km	<b>Emissions CO<sub>2</sub></b>	191 g/km	150 g/km
<b>Consumption</b>	10.4 l/100 km	8.2 l/100 km	<b>Consumption</b>	8.2 l/100 km	6.6 l/100 km

\*Weight of bike ready to ride, with all fluids and the fuel tank 90% full

Travel worry-free with a 2-year Warranty including Roadside Assistance: coverage across Europe, towing to the nearest Authorised Service Centre, original spare parts, additional services (e.g.: passenger transportation, taxi, hotel, vehicle repatriation). Ask your Dealer or Authorised Service Centre for details of the service. Discover X-Care, the unlimited 12 or 24-month warranty extension that offers you the same coverage as the original warranty:

- Coverage of repair costs for faults due to manufacturing or assembly failures;
- Replacement of damaged spare parts with original ones, labor included;
- Roadside assistance that, in addition to repairs and towing service, guarantees non-stop mobility;
- Specialized and certified Piaggio Group Service assistance;
- Retention of the used value in case of resale.

Check models included and the coverage available in your country.

**X-CARE**

**FINANCIAL SERVICES**  
**PIAGGIO**

The dream of riding a Moto Guzzi is now even easier to achieve, thanks to Piaggio Financial Services, the new Piaggio Group platform dedicated to the most innovative financing solutions.

[www.piaggiofinancialservices.com](http://www.piaggiofinancialservices.com)

COMPANY WITH ENVIRONMENTAL SYSTEM CERTIFIED BY DNV  
= ISO 14001 =

COMPANY WITH QUALITY SYSTEM CERTIFIED BY DNV  
= ISO 9001 =

COMPANY WITH SAFETY SYSTEM CERTIFIED BY DNV  
= OHSAS 18001 =

Moto Guzzi is a registered trademark of Piaggio & C. S.p.A.



**MOTO GUZZI**®

PROUDLY AUTHENTIC MOTORCYCLES. SINCE 1921.

[MOTOGUZZI.COM](http://MOTOGUZZI.COM)